

X-SERIES SWEEP



TOTAL VALUE. TOTAL SYSTEMS.™





A TRUE ZERO-ENTRY COMMERCIAL



SERIES SWEEP™

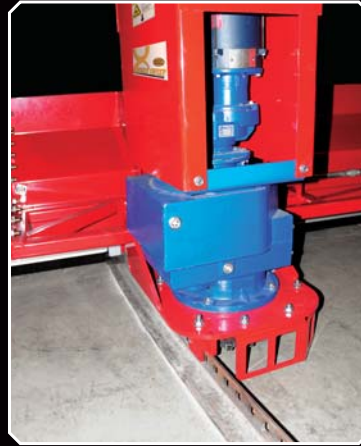
PATENT PENDING

X-SERIES SWEEP FEATURES

- True Zero-Entry Sweep.
- 2 Auger Sizes Available
 - 12" Model - nominal capacity ranges from 5,000-7,000 BPH
 - 16" Model - nominal capacity ranges from 8,000-10,000 BPH
- Control program and track drive provides a positive drive, maximizing sweep capacities.
- Sweep will automatically back up in an over amperage (avalanche) situation while keeping the flight engaged.

POSITIVE DRIVE SWEEP

- Drive assembly attached directly to the back shield through a pivot pin design.
- Motor/Gearbox combination drives a sprocket which engages a track anchored to the concrete floor, eliminating slippage of the drive tractor.
- Positive drive gearbox is factory filled with food grade lubricant.



Track anchors to concrete floor.



Pivot pin design attaches drive assembly to sweep.



Drive assembly sprocket engaged to track enables forward and reverse travel with no drive slippage.



X-SERIES CONTROL PANEL



◀ Home Screen

Set-up Screen ▶



Bushels
◀ Remaining Screen

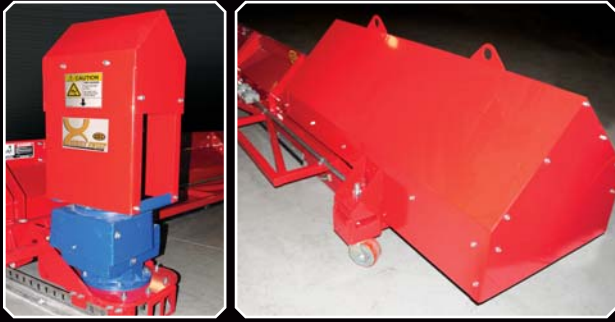
PANEL CAPABILITIES AND DISPLAYS

- Sweep Position
- Drive and Flight Motor Amperage
- Estimated Bushel Capacity (unload rate)
- Calculates estimated time remaining
- Tractor in motion (forward-stop-reverse)
- Error Annunciation
- Automatic/Manual Operation
- Enable/Disable

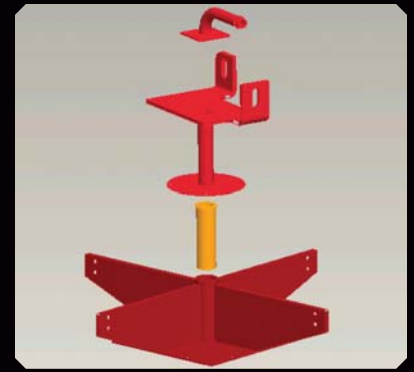
SPECIAL BIN SWEEP

NEW DIRECT DRIVE DESIGN

- Auger driven by motor/gearbox combination.
- All motors are explosion proof rated for Class II, Groups F & G environments.
- Auger drive gearbox features heavy-duty tapered roller bearings.
- Gearbox also includes XT Harsh Duty output seal, and is factory filled with food grade lubricant.



HEAVY-DUTY, LEAVE IN PLACE, MOTOR COVERS



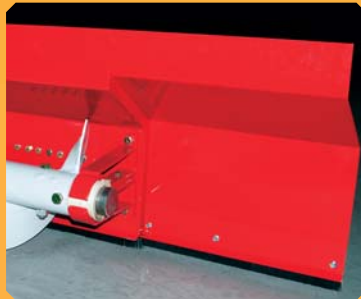
Improved center pivot design incorporates a bronze bushing to offer a non-lubricated center pivot solution.



Reinforced Hanger Bearing Brackets

INTEGRATED PLOW AT END OF SWEEP

- Adjustable depending on spacing needed to accommodate GSI inner 2-ring door frames.
- Shear bolt design - safety feature to prevent major damage to the sweep and obstacle in the event of contact.

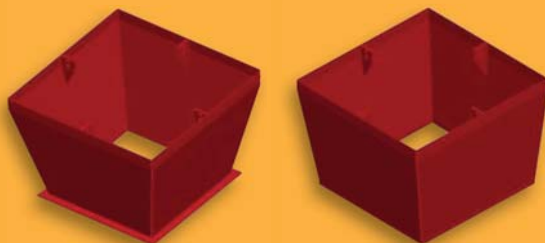


New Front Wheel Strut Design



30,000 & 50,000 BU/HR. SUMP DESIGNS

- For optimal performance a distance of 6-10 ft. between intermediate sumps is recommended, depending on product being stored.
- Not intended for tanks with full floors.



NEW BOTTOM SHIELD BRUSH

- Brush stays engaged with bin floor to help sweep the grain away for maximum cleanout.



New Back Shield Castor Design

GSI requires 10-ga. min. plate material laid flush with concrete to cover aeration tunnels. (Plate material not provided by GSI.)

Front and back castors are in line to minimize the number of wheel tracks around the bin.

X-SERIES SWEEP SPECIFICATIONS

| Auger Size | Bin Diameter | Track Drive Horsepower | Auger Drive HP 5,000 - 7,000 BPH | Length Pivot to End (no plow) | Min. Length Pivot to End (plow fully retracted) | Max. Length Pivot to End (plow fully extended) |
|----------------------|--------------|------------------------|-------------------------------------|-------------------------------------|---|--|
| 12" AUGER | 48' | 1/2 | 15 | 22' 4" | 23' 4" | 24' 1" |
| | 54' | 1/2 | 15 | 25' 4" | 26' 4" | 27' |
| | 60' | 1/2 | 15 | 28' 4" | 29' 3" | 30' |
| | 72' | 1/2 | 15 | 34' 4" | 35' 3" | 36' |
| | 75' | 1/2 | 15 | 35' 4" | 36' 4" | 37' |
| | 78' | 1/2 | 15 | 37' 4" | 38' 3" | 39' |
| | 90' | 1/2 | 20 | 43' 4" | 44' 3" | 45' |
| | 105' | 1/2 | 25 | 50' 4" | 51' 3" | 52' |
| | 135' | 1/2 | 25 | 65' 4" | 66' 4" | 67' |

| Auger Size | Bin Diameter | Track Drive Horsepower | Auger Drive HP 8,000 - 10,000 BPH | Length Pivot to End | Min. Length Pivot to End (plow fully retracted) | Max. Length Pivot to End (plow fully extended) |
|----------------------|--------------|------------------------|--------------------------------------|------------------------|---|--|
| 16" AUGER | 48' | 1/2 | 15 | 22' 4" | 23' 4" | 24' 1" |
| | 54' | 1/2 | 15 | 25' 4" | 26' 4" | 27' |
| | 60' | 1/2 | 20 | 28' 4" | 29' 3" | 30' |
| | 72' | 1/2 | 20 | 34' 4" | 35' 3" | 36' |
| | 75' | 1/2 | 20 | 35' 4" | 36' 4" | 37' |
| | 78' | 1/2 | 20 | 37' 4" | 38' 3" | 39' |
| | 90' | 1/2 | 25 | 43' 4" | 44' 3" | 45' |
| | 105' | 1/2 | 30 | 50' 4" | 51' 3" | 52' |
| | 135' | 1/2 | 30 | 65' 4" | 66' 4" | 67' |

Capacities and stated motor horsepowers based on dry, free flowing, granular material.
X-Series Sweep not intended for tanks with full floors.



TOTAL VALUE. TOTAL SYSTEMS.

GSI dealers are the most knowledgeable, well trained, and dependable people in the industry. GSI dealers are provided extensive training for proper installation, operation and maintenance of GSI products in a world class learning facility located in Assumption, IL. When you buy GSI, you get a quality product, with the service you would expect from a worldwide leader.



TO LOCATE A GSI DEALER IN YOUR AREA, VISIT OUR WEBSITE DEALER LOCATOR AT WWW.GSIAG.COM



GS-058



www.gsiag.com

TOTAL VALUE. TOTAL SYSTEMS.™

GS-058 JAN/12 Rev. 2

Copyright ©2011 by GSI Group, Inc. | Printed in the USA | Due to continual improvements, GSI Group, Inc. reserves the right to change designs and specifications without notice.